



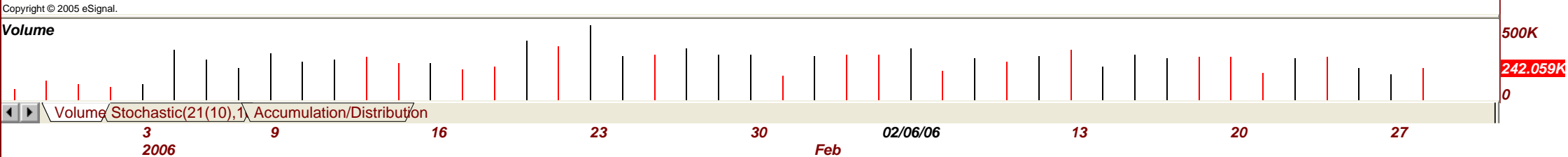
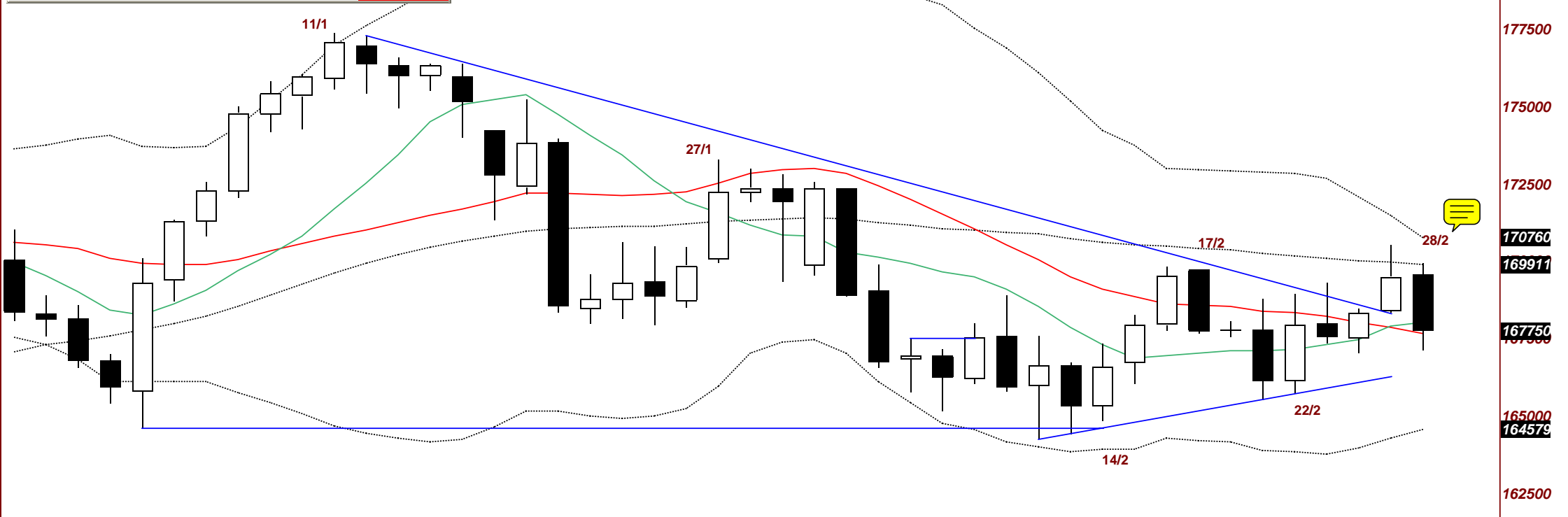
## Trading the US Market Webinar

### 28 Feb 2006: Agenda

- **General Market Overview on ES/SPY, QQQQ/NQ, INDU, IJR, SMH, HHH & OIH**
- **Recent setups under the microscope**
- **Check List for traders**
- **Perseus QQQ-SPY Advisor overview of market & review of the Perseus system**
- **Perseus mid-term market view**
- **Pyxis Global Investor Review & recent trades**

**Charts attached below for reference**

O: 169600 H: 169950 L: 167100 C: 167750 Net: -1750



3 9 16 23 30 02/06/06 13 20 27

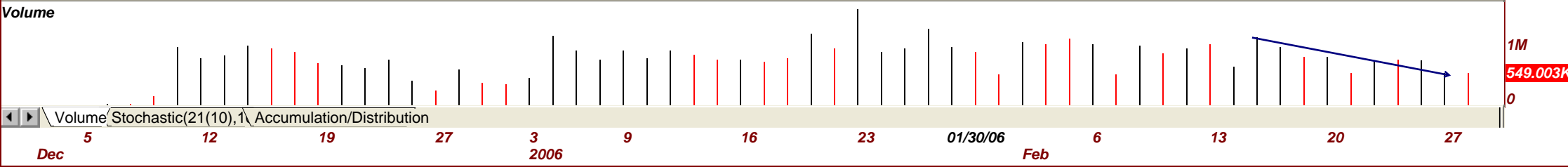
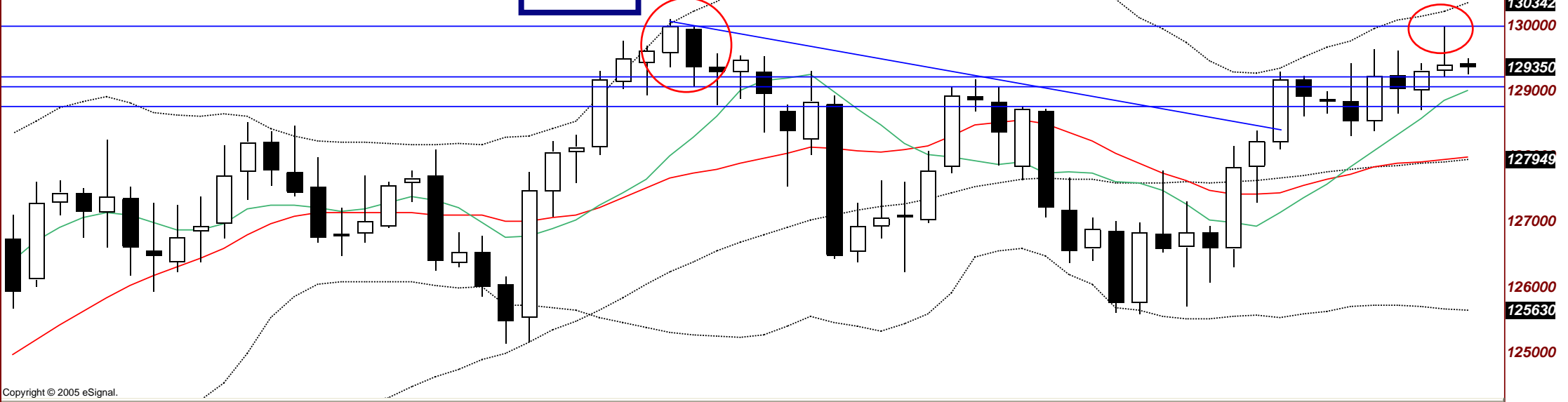
2006 Feb

179558  
177500  
175000  
172500  
170760  
169911  
167750  
167500  
165000  
164579  
162500  
500K  
242.059K  
0



: 129425 H: 129500 L: 129250 C: 129350 Net: -50

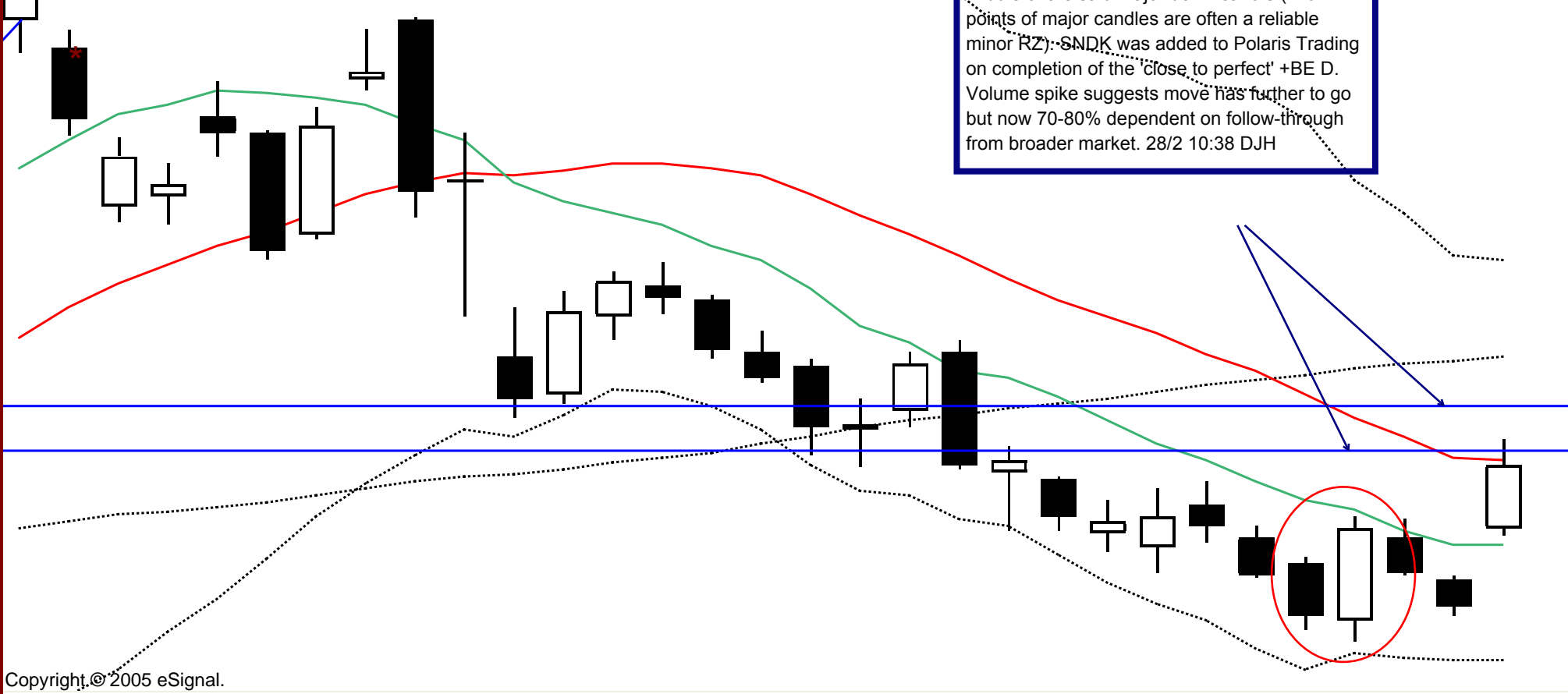
12 Jan -BE D



(SNDK - SANDISK CORP;D) Dynamic;0:00-24:00

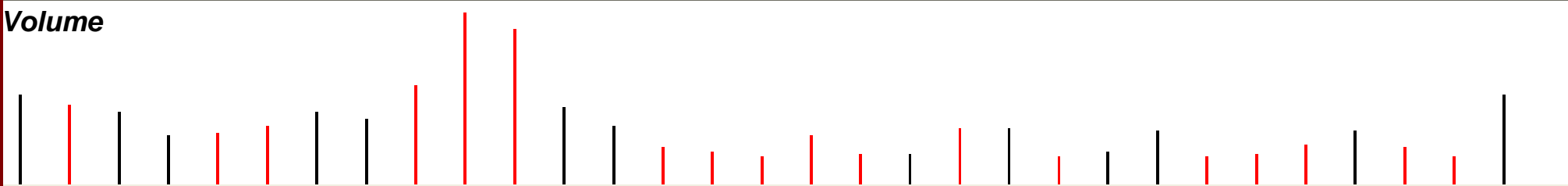
: 59.00 H: 61.98 L: 58.73 C: 61.08 Net: + 4.74

These are the first zones of resistance: the best fit level at foot of that huge -BE D zone, and the middle of the said major down candle (mid points of major candles are often a reliable minor RZ): SNDK was added to Polaris Trading on completion of the 'close to perfect' +BE D. Volume spike suggests move has further to go but now 70-80% dependent on follow-through from broader market. 28/2 10:38 DJH



80.00  
75.676  
75.00  
70.00  
68.0566  
64.8148  
60.00  
55.00  
54.4794

Copyright © 2005 eSignal.



25M  
20.748523M  
0

Volume Stochastic(21(10),1) Accumulation/Distribution

17 23 30 6 13 21 02/24/06 7  
Feb

Symbol  Periods

### Nasdaq McClellan Oscillator (Ratio Adjusted) (\$NAMO) INDX

27-Feb-2006 4:00pm

Open 14.35 High 14.35 Low 14.35 Last 14.3

▲ RSI(14) 55.14



[Print](#) - [Annotate](#) - [Send](#) - [Linkable Version](#) - [Instructions](#) - [Report Problems](#) - [Beta Discussion Board](#)

#### Chart Attributes

Range  Bar  Gap  Extra Bars

Type  Size  Color Scheme

Volume:  Overlay  Full Quote  Price Labels  Log Scale  Colored Prices  Colored Volume  Show Legends

#### Overlays

Parameters

Simple Mov. Avg   
 Simple Mov. Avg   
 - None -

**Update**

<input type="checkbox"/> Indicators	Parameters	Position	
RSI	<input type="text" value="14"/>	Above	<input type="checkbox"/>
MACD	<input type="text" value="12,26,9"/>	Below	<input type="checkbox"/>
- None -	<input type="text"/>	Below	<input type="checkbox"/>

**Update**  [About Indicators](#) - [Glossary](#)